

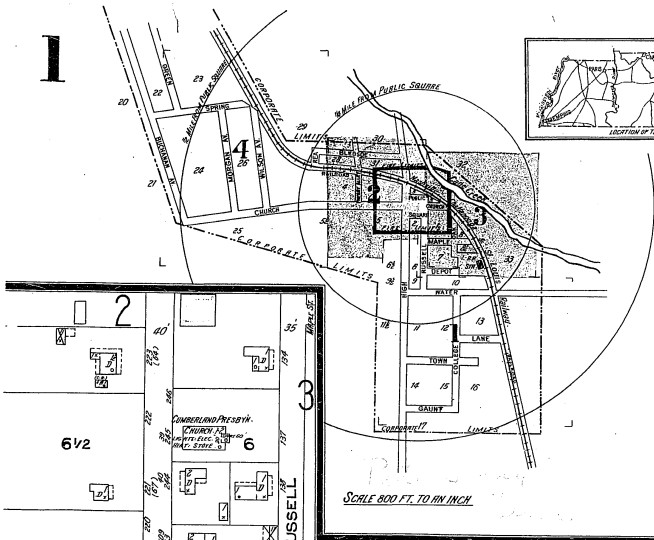
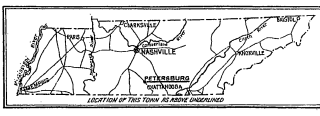


WATER FACILITIES: None.

FIRE DEPT.:

Volunteer, 15 men - 1 Oberlin Boyer Fire Truck equipped with 40 of rollers, 3-35 gal. chem tanks, 500 ft. rubber hose & 2-25 gal. chem. extinguishers. Engine to height of 30 ft. 4th corner Russell & Church. - Construction of building, brick. Fire Alarm by telephone.

Elevations - Irregular.
Public Square - Gravelled.
Public Lighting - 27c.

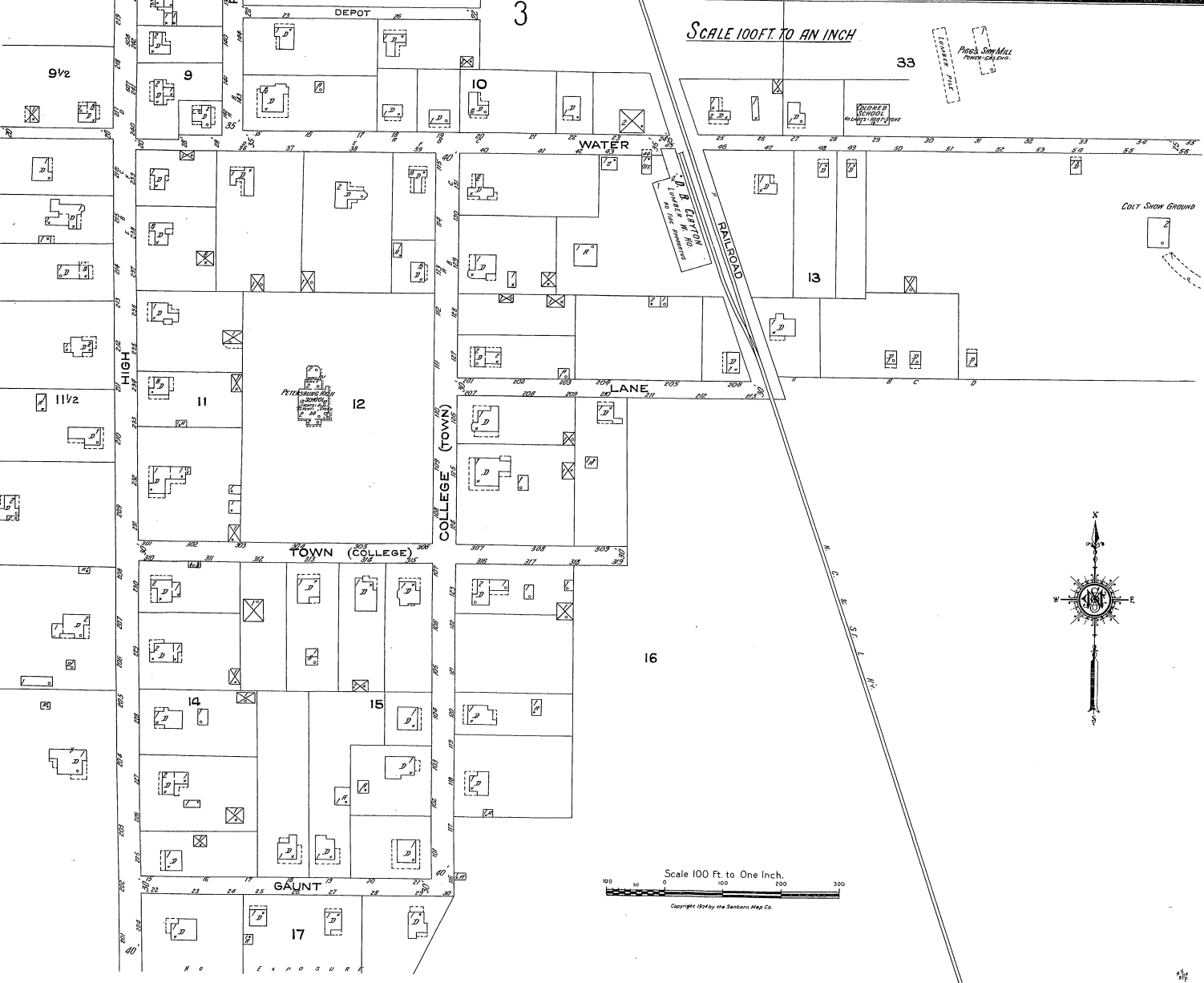


KEY

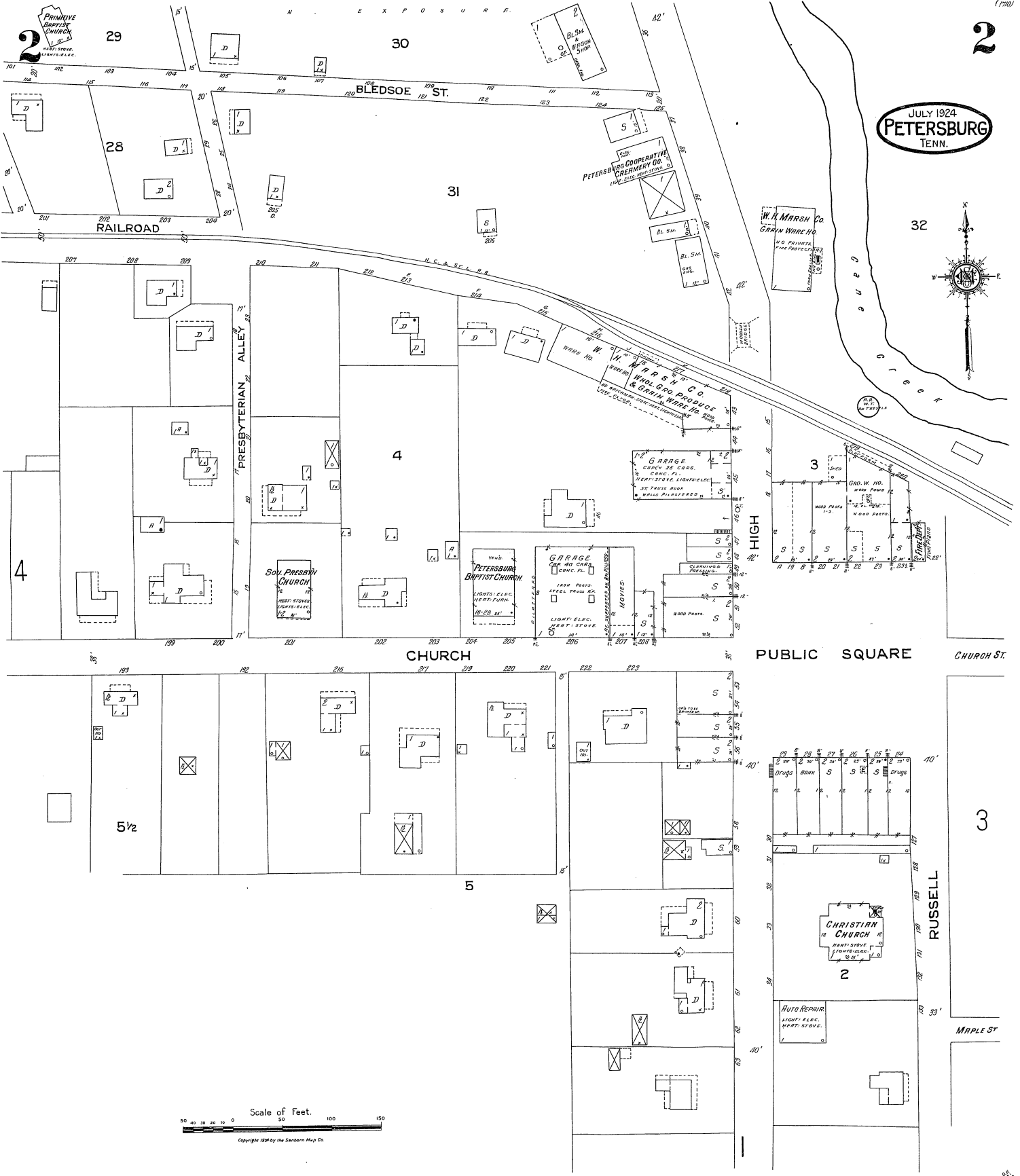
- WINDMILL
- WATER TOWER
- WATER MAIN
- WATER VALVE
- WATER HYDRANT
- WATER PUMP
- WATER CISTERN
- WATER PIPE
- WATER TANK
- WATER RESERVOIR
- WATER CONDUIT
- WATER DRAIN
- WATER SINK
- WATER FOUNTAIN
- WATER SPRING
- WATER WELL
- WATER POND
- WATER LAKE
- WATER RIVER
- WATER CREEK
- WATER STREAM
- WATER BRIDGE
- WATER TUNNEL
- WATER DAM
- WATER LOCK
- WATER WEIR
- WATER GATE
- WATER SLUICE
- WATER BARRAGE
- WATER DIVERSION
- WATER TREATMENT
- WATER PURIFICATION
- WATER DISTRIBUTION
- WATER COLLECTION
- WATER CONSERVATION
- WATER POLLUTION
- WATER QUALITY
- WATER QUANTITY
- WATER COST
- WATER REVENUE
- WATER MANAGEMENT
- WATER PLANNING
- WATER ENGINEERING
- WATER CONSTRUCTION
- WATER MAINTENANCE
- WATER REPAIRS
- WATER REPLACEMENT
- WATER UPGRADE
- WATER MODERNIZATION
- WATER EXPANSION
- WATER CONTRACTING
- WATER CONSULTING
- WATER DESIGN
- WATER SURVEYING
- WATER TESTING
- WATER ANALYSIS
- WATER MONITORING
- WATER RECORDING
- WATER REPORTING
- WATER EVALUATION
- WATER IMPROVEMENT
- WATER PROTECTION
- WATER PRESERVATION
- WATER RESTORATION
- WATER REHABILITATION
- WATER RENOVATION
- WATER REPAIR
- WATER MAINTENANCE
- WATER REPAIRS
- WATER REPLACEMENT
- WATER UPGRADE
- WATER MODERNIZATION
- WATER EXPANSION
- WATER CONTRACTING
- WATER CONSULTING
- WATER DESIGN
- WATER SURVEYING
- WATER TESTING
- WATER ANALYSIS
- WATER MONITORING
- WATER RECORDING
- WATER REPORTING
- WATER EVALUATION
- WATER IMPROVEMENT
- WATER PROTECTION
- WATER PRESERVATION
- WATER RESTORATION
- WATER REHABILITATION
- WATER RENOVATION
- WATER REPAIR

INDEX

SPECIALS	NO.	NAME	NO.	NAME
Christian Church	1	Marsh, W. H. Co. Wholesale Grocery	1	Petersburg Light and Power Co.
Church, D. B. Lumber Warehouse	2	Produce and Grain Warehouses	2	Fligg's Saw Mill
Colt Show Grounds, Buildings	3	Morgan School	3	First Union
Commercial Presbyterian Church	4	N. C. & St. L. R'y Depot	4	Primitive Baptist Church
Fire Department	5	Peterburg Baptist Church	5	Public School (Colored)
Liggett, H. Saw Mill	6	Cooperative Creamery Co.	6	Southern Presbyterian Church
Lana Hotel	7	High School	7	Union Methodist Episcopal Church



JULY 1924
PETERSBURG
TENN.

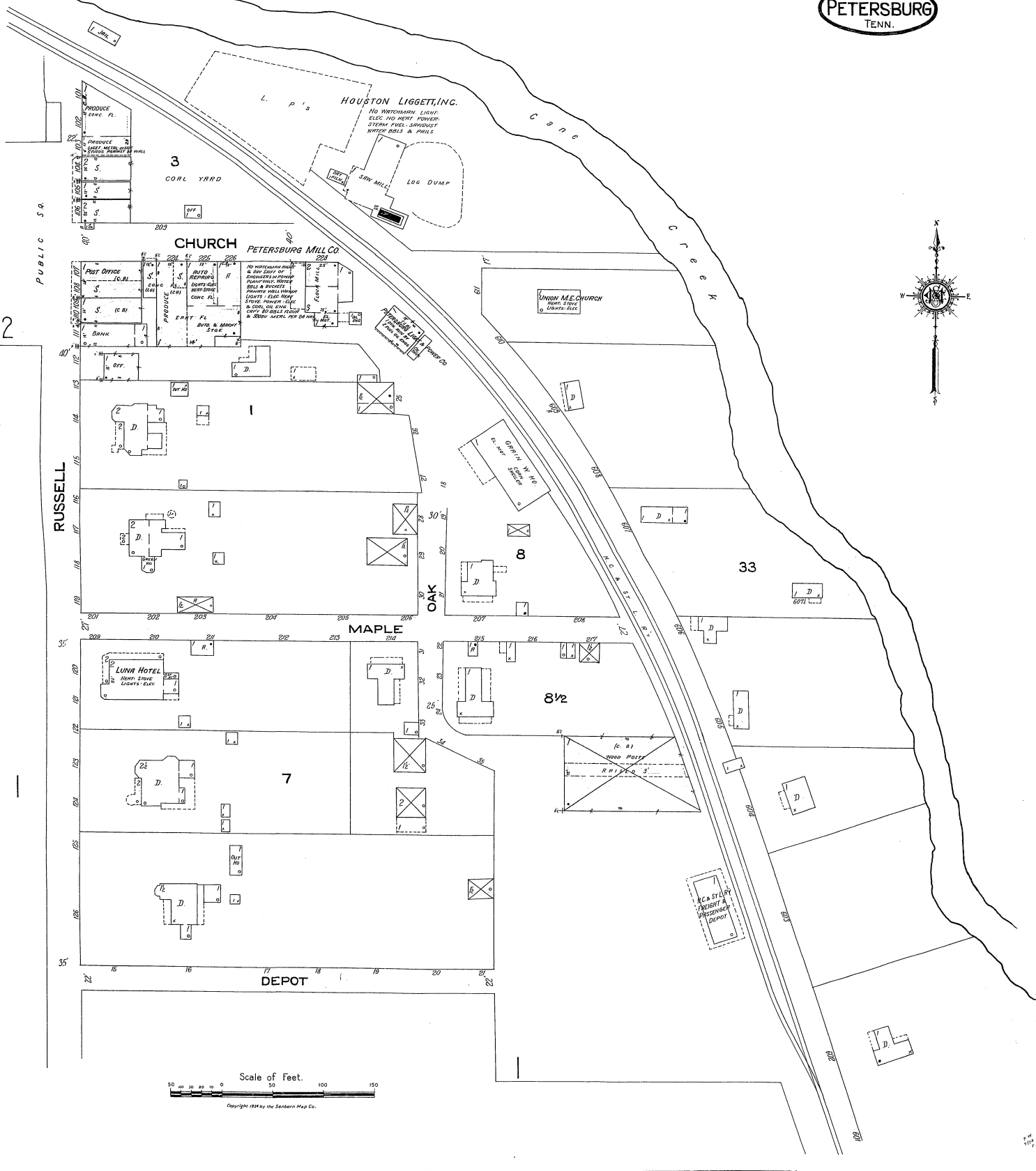


Scale of Feet.
 50 40 30 20 10 0 50 100 150
 Copyright 1924 by the Sanborn Map Co.

3

3

JULY 1924
PETERSBURG
TENN.



4

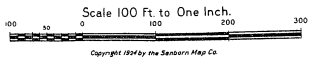
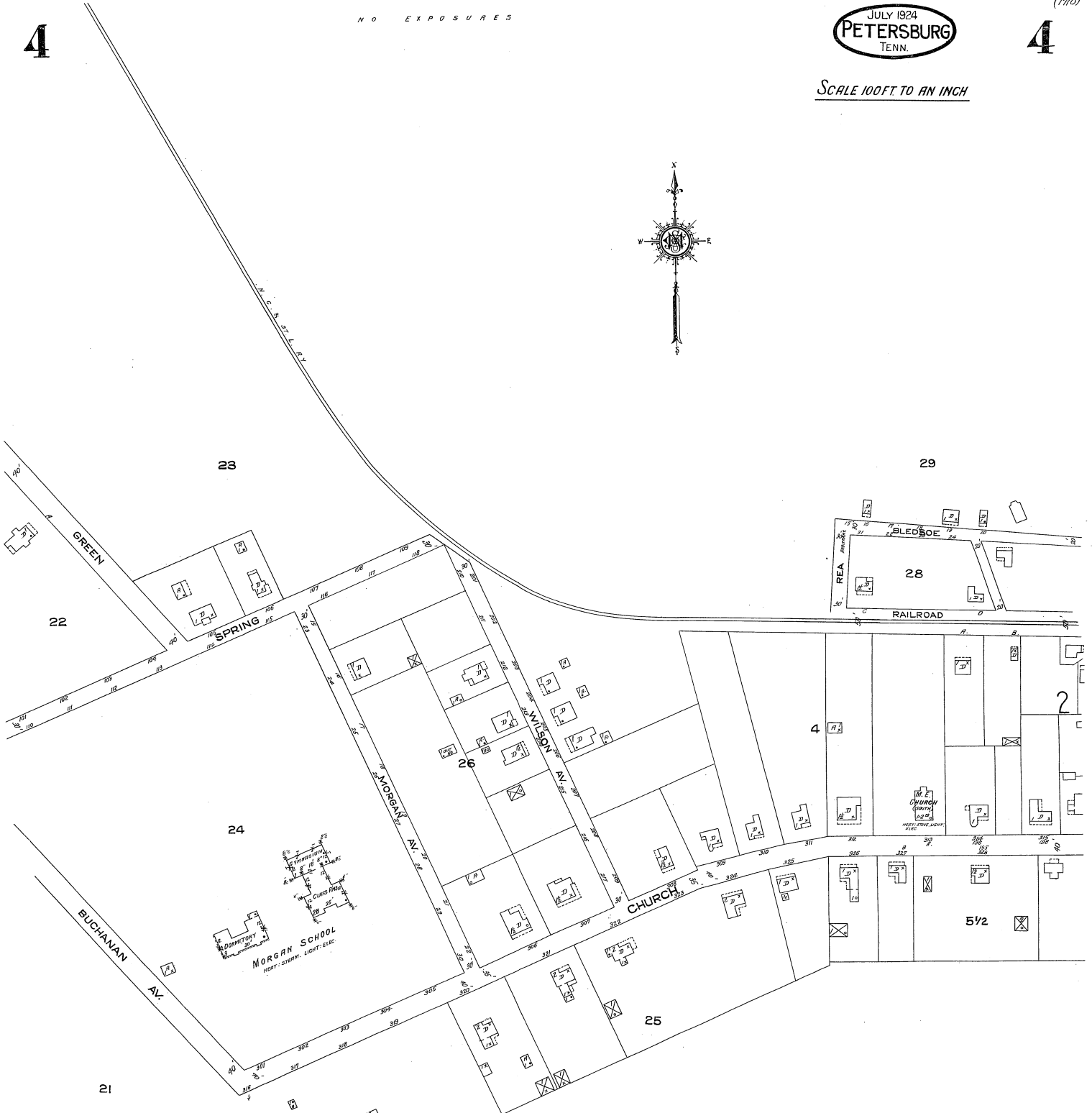
NO EXPOSURES

JULY 1924
PETERSBURG
TENN.

(1710)

4

SCALE 100 FT TO AN INCH



Scale 100 Ft. to One Inch.

Copyright 1924 by the Sanborn Map Co.

NO EXPOSURES.